



Casters & Wheels

for Aviation Industry

>>> 航空地勤设备 脚轮使用推介

1. Excellent durability and weather resistance
2. Large load capacity
3. Flexible rolling
4. Shock-absorbing and Low-speed traction

机场地勤设备使用脚轮要求: 耐磨耐候, 负重大, 转动灵活, 抗冲击, 部分需要减震或低速牵引。



80 Series

DW 80 Series Designed from high quality heat treated AISI 1045 stamped steel. Inside and outside welds deliver superior strength. Designed for taking the punishment of constant swiveling or for service where shock or impact loads might damage less rugged casters. Highly recommended for automotive and aerospace applications.

DW 80 系列，优质 45# 钢热处理加工成型，内外双边侧板焊接，保证高强度的负载能力；抗冲击珠碗结构，即使在长时间的运行或经受冲击后，还能保持正常运作。



**kg. 1400
LAST**



Yellow PU on Iron
85-95 Shore A

黄色 PU 包生铁
硬度 85-95A



Yellow PU on Steel Core
85-95 Shore A

黄色 PU 钢芯
硬度 85-95A

APPLICATIONS 应用

- » Maintenance Stepladders
- » Maintenance Access Platforms
- » Aircraft Tripod Jacks
- » Hangar Doors
- » Scissor high loaders
- » Cargo Caster Decks
- 维修活动梯
- 移动式维修平台
- 三脚架千斤顶
- 机库门
- 升降装卸机
- 货物运输台



81 Series



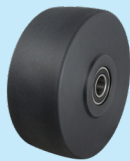
APPLICATIONS 应用

- » Maintenance Stepladders
- » Vehicle-Towed Towbars
- » Dollies
- » Marking Machines
- 维修活动梯
- 汽车牵引杆
- 周转手推车
- 标线机

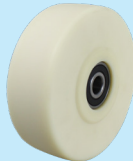
 **800**
LAST



Yellow PU on Steel Core
85-95 Shore A
黄色 PU 钢芯
硬度 85-95A



Black MC Nylon
黑色 MC 尼龙



Natural MC Nylon
原色 MC 尼龙



Natural Nylon
原色尼龙



Yellow PU on Iron
85-95 Shore A
黄色 PU 生铁
硬度 85-95A



White PP
瓷白色 PP

DW 81 Series AISI 1045 stamped steel with kingpinless construction is more durable than competitor's case or induction hardened construction.

DW 81 系列，45# 钢材质配以抗冲击结构，更牢固可靠。



83 Series

DW 83 Series Designed from high quality heat treated AISI 1045 stamped steel. Inside and outside welds deliver superior strength. Designed for taking the punishment of constant swiveling or for service where shock or impact loads might damage less rugged casters. Highly recommended for automotive and aerospace applications.

DW 83 系列，优质 45# 钢热处理加工成型，内外双边侧板焊接，保证高强度的负载能力；抗冲击珠碗结构，即使在长时间的运行或经受冲击后，还能保持正常运作。



**kg. 4500
LAST**



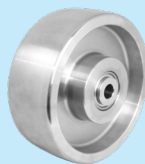
Yellow PU on Iron
85-95 Shore A
黄色 PU 包生铁
硬度 85-95A



Black MC Nylon
黑色 MC 尼龙



Natural MC Nylon
原色 MC 尼龙



Stainless Steel
不锈钢



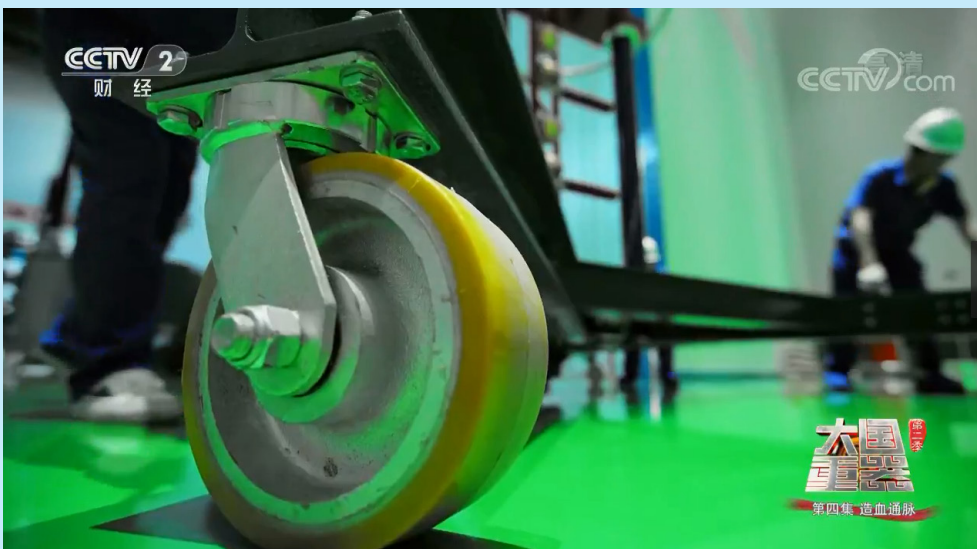
Red PU on Aluminium
85-95 Shore A
红色 PU 包铝芯
硬度 85-95A



Yellow PU on Steel Core
85-95 Shore A
黄色 PU 钢芯
硬度 85-95A

APPLICATIONS 应用

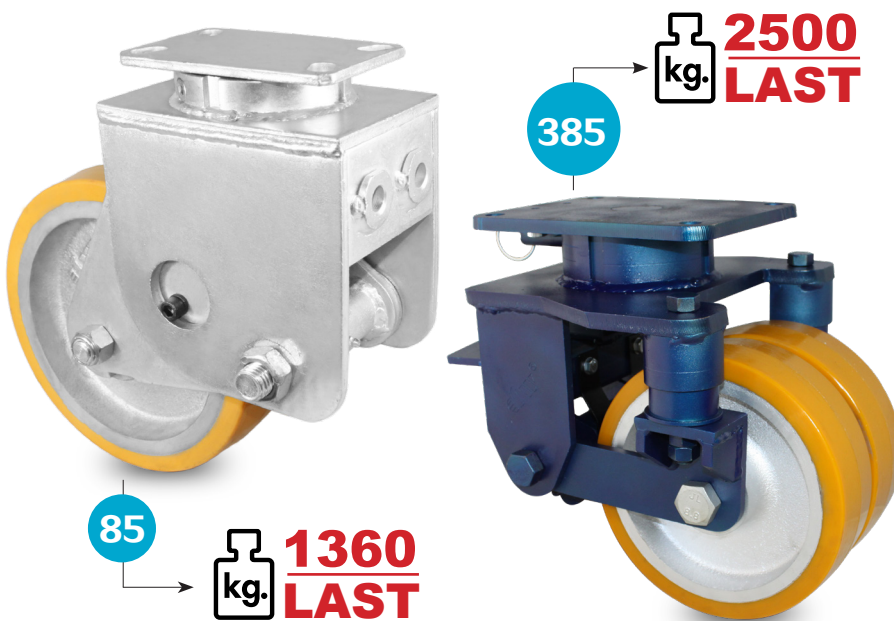
- » Maintenance Stepladders
- » Maintenance Access Platforms
- » Aircraft Tripod Jacks
- » Hangar Doors
- » Scissor high loaders
- » Cargo Caster Decks
- 维修活动梯
- 移动式维修平台
- 三脚架千斤顶
- 机库门
- 升降装卸机
- 货物运输台



85/385 Series

DW 85/385 Series Extra heavy duty shock absorbing caster with kingpinless construction. Greater capacity and protection from damaging shock or unwanted vibration and movement.

DW 85/385 系列，超重型抗冲击结构加配以特殊的减震系统，转动灵活，抗震效果明显。



APPLICATIONS 应用

- » Maintenance Stepladders
- » Maintenance Access Platforms
- » Aircraft Tripod Jacks
- » Hangar Doors
- » Scissor high loaders
- » Cargo Caster Decks

- 维修活动梯
- 移动式维修平台
- 三脚架千斤顶
- 机库门
- 升降装卸机
- 货物运输台



Yellow PU on Iron
85-95 Shore A
黄色 PU 包生铁
硬度 85-95A



88 Series



DW 88 Series Designed from high quality heat treated AISI 1045 stamped steel. Ball bearings mounted in precision machined raceways & dual wheels offer greater capacity and better distribution for floor load.

Low gravity casters for optional.

DW 88 系列，优质 45# 钢热处理加工成型，内外双珠碗和双轮结构，转向灵活，承载加倍。另有低重心脚轮可选。



Black MC Nylon
黑色 MC 尼龙



Yellow PU on Iron
85-95 Shore A
黄色 PU 包生铁
硬度 85-95A

APPLICATIONS 应用

- » Maintenance Stepladders
- » Maintenance Access Platforms
- » Aircraft Tripod Jacks
- » Hangar Doors
- » Scissor high loaders
- 维修活动梯
- 移动式维修平台
- 三脚架千斤顶
- 机库门
- 升降装卸机



89 Series



DW 89 Series Designed from high quality heat treated AISI 1045 stamped steel. Double ball bearings mounted in precision machined raceways, for taking the punishment of constant swiveling or for service where shock or impact loads might damage less rugged casters. Highly recommended for automotive and aerospace applications.

DW 89 系列，优质 45# 钢热处理加工成型，双层钢球嵌入精加工内外双珠碗的抗冲击结构，超高负载下依然转动灵活。

APPLICATIONS 应用

- » Maintenance Access Platforms
- » Hangar Doors
- » Scissor high loaders
- 移动式维修平台
- 机库门
- 升降装卸机



Yellow PU on Iron
85-95 Shore A
黄色 PU 包生铁
硬度 85-95A



kg. 7000 LAST

91 Series

APPLICATIONS 应用

- » Maintenance Access Platforms
- » Hangar Doors
- » Scissor high loaders
- 移动式维修平台
- 机库门
- 升降装卸机

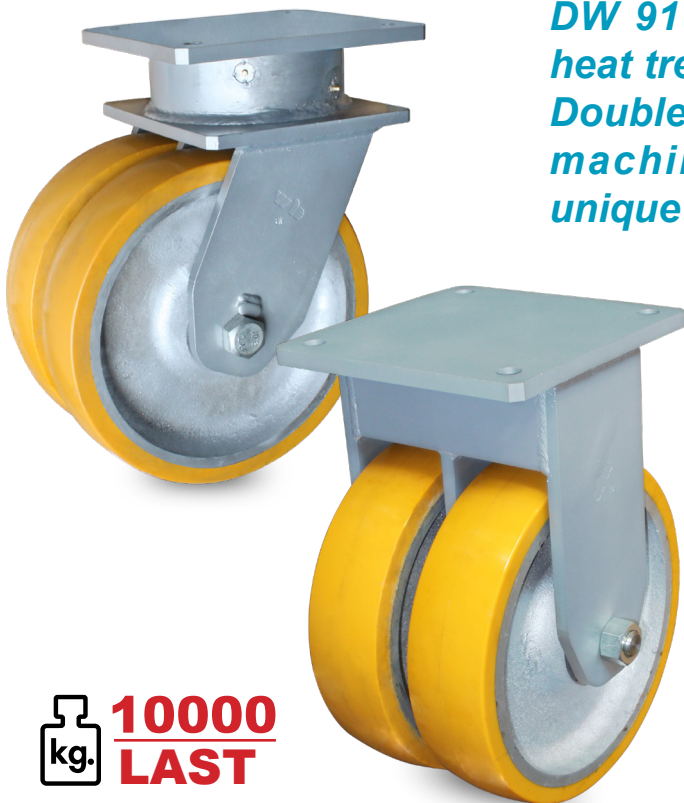


Yellow PU on Iron
85-95 Shore A
黄色 PU 包生铁
硬度 85-95A



DW 91 Series Designed from high quality heat treated AISI 1045 stamped steel & 40Cr. Double ball bearings mounted in precision machined raceways & dual wheel offer unique extra heavy load ability.

DW 91 系列，优质 45# 钢和 40 铬材质，双层钢球嵌入精加工内外双珠碗的抗冲击结构，可靠的 PU 铁芯双轮，是超重型设备的首选。



10000
LAST



50 Series

DW 50 Series Air cargo deck caster, precise and innovative design.

DW 50 系列，机场运输脚轮，符合行业标准化设计。



APPLICATIONS 应用

- » Cargo Caster Decks
- 货物运输台



White Nylon
白色尼龙

 **250**
LAST

202 Series

DW 202 Series Central locking system & low noise, safe and maneuverability.

DW 202 系列，符合行业标准的中控刹制系统，静音安全，易操控。



 **100**
LAST

APPLICATIONS 应用

- » Catering Trolleys
- 飞机餐车

